

Sri Krsna Caitanya Prabhu Nityananda
Sri Advaita Gadadara Srivasadi
Gaura Bhakta Vrinda

Hare Krsna Hare Krsna
Krsna Krsna Hare Hare
Hare Rama Hare Rama
Rama Rama Hare Hare



Week 352

Aug 07
2015

Gokul Bhajan & Vedic Studies
North Carolina, USA



Jaya Rādha Mādhava
Jaya Kunja Vihārī

Jaya Gopī Jana Vallabha
Jaya Giri Vara Dhārī ... (Jaya)

Yaśodā Nandana Vraja Jana Ranjana
Yamunā tīra Vana Cārī ... (Jaya)

[Hare Krishna Hare Krishna
Krishna Krishna Hare Hare
Hare Rāma Hare Rāma
Rāma Rāma Hare Hare]



Brahma Samhita



Slides Video



Ganga has Flooded in Nawadwip



অপরাধীতনকরন

জয় শ্রীকৃষ্ণ চৈতন্য অতনিতানন্দ শ্রীঅনন্তধন শ্রীকালীচৌর্য ততকাম

Haré chait

হরে কৃষ্ণ
হরে কৃষ্ণ
কৃষ্ণ কৃষ্ণ
হরে হরে
হরে রাম
হরে রাম
রাম রাম
হরে হরে

Haré Kṛṣṇa
Haré Kṛṣṇa
Kṛṣṇa Kṛṣṇa
Haré Haré
Haré Nāma
Haré Nāma
Nāma Nāma
Haré Haré







A decorative banner for Guru Purnima. The background features a night scene with a full moon, a hand pointing upwards, a bull, and a guru blessing a student. The text 'Guru Purnima' is written in a glowing orange font. The banner is framed by green vines and pink roses.

Guru Purnima

**Guru Poornima
(July 31, 2015)**



CLICK FOR VIDEO



Bonafide Guru is extremely difficult to find....

guru paahataa paahataa laksh kotii |
bahusaal mantraavalii shakti mothii ||
manii kaamna chetake dhaatmaata |
jani vyaarth re to navhe muktidaata ||

Meaning

There are crores of preceptors in this world.
They know many mantras and wield tremendous power.
They have desires and cravings in their mind.
They are of no use. They cannot take their
disciples to the state of salvation.



ON THE FLY
SLOKA!



Only a fortunate soul
gets a Bonafide Guru

CC-33

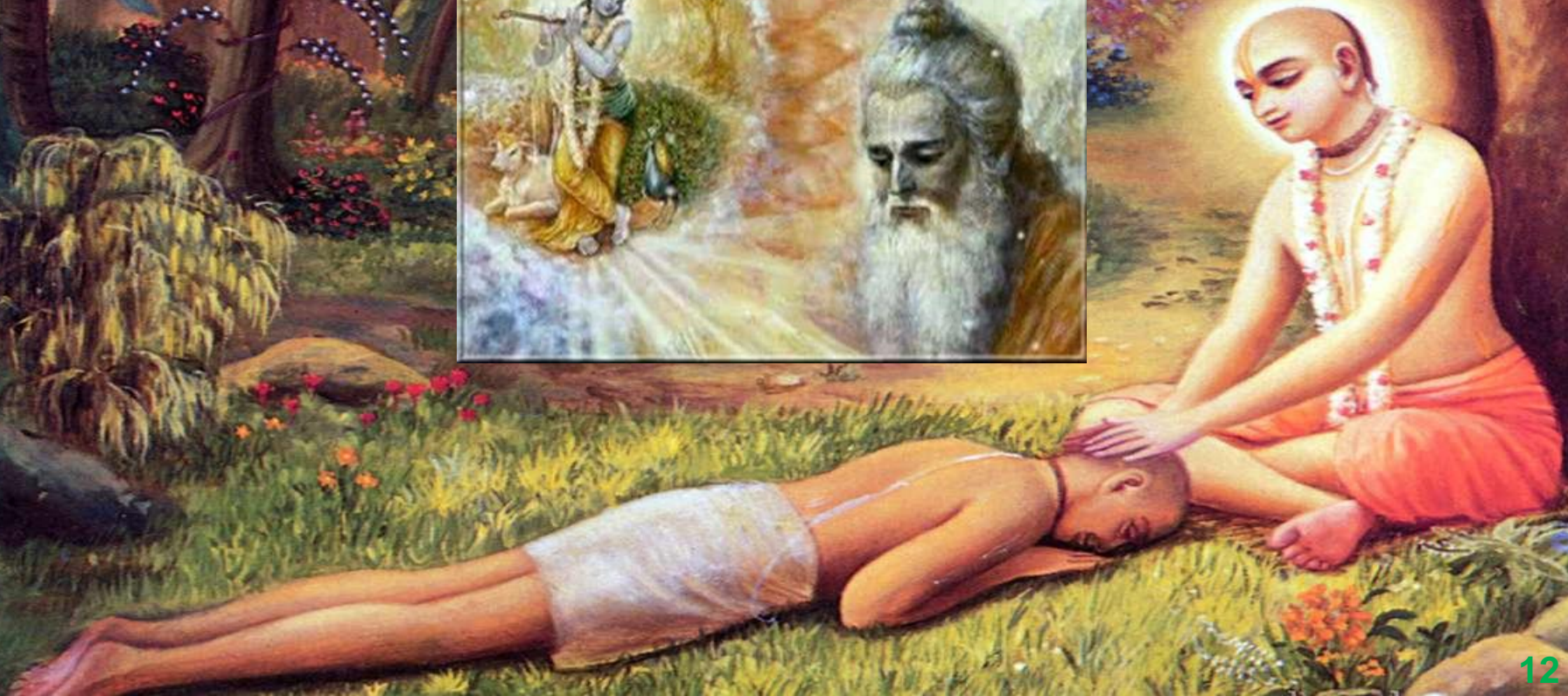
krsna yadi krpā kare kona bhāgyavāne
guru-antaryāmi-rūpe, śikhāya āpane

... CC Madha 22.47

[By the mercy of Krishna, a fortunate soul is guided by the
Supersoul from within, and by the Guru from with-out]



The Holy Name alone is sufficient to take you back home Back To Godhead.
However to cultivate the mood of surrender, You need a Guru.



E-93



Yellām Gurudev, Yenakkellām Gurudev
Yellaiyillā Jagat Gurudev ... (Yellām)

Kālaiyilum Mālaiyilum
Karuththāi Entha Velaiyilum
Karunaiyulla Gurudevai
Chiram Thāzhthi Pāduvom ... (Yellām)

Rādhai-in Preeyamām
Ramana Manjari Perumām
Yirakkamulla Devanām
Enthan Sontha Moolamām ... (Yellām)

Gaura Deva Sevane
Kānjana Devi Nesame
Koti Koti Janmamum
Kidaikkumo Nam Gurudev ... (Yellām)

Rāja Rāja Ranjini
Ramana Devi Sundari
Rādhā Krishna Sevaiyai
Nalgum Deva Manjari ... (Yellām)

(Guru Poornima -
July 31, 2015)





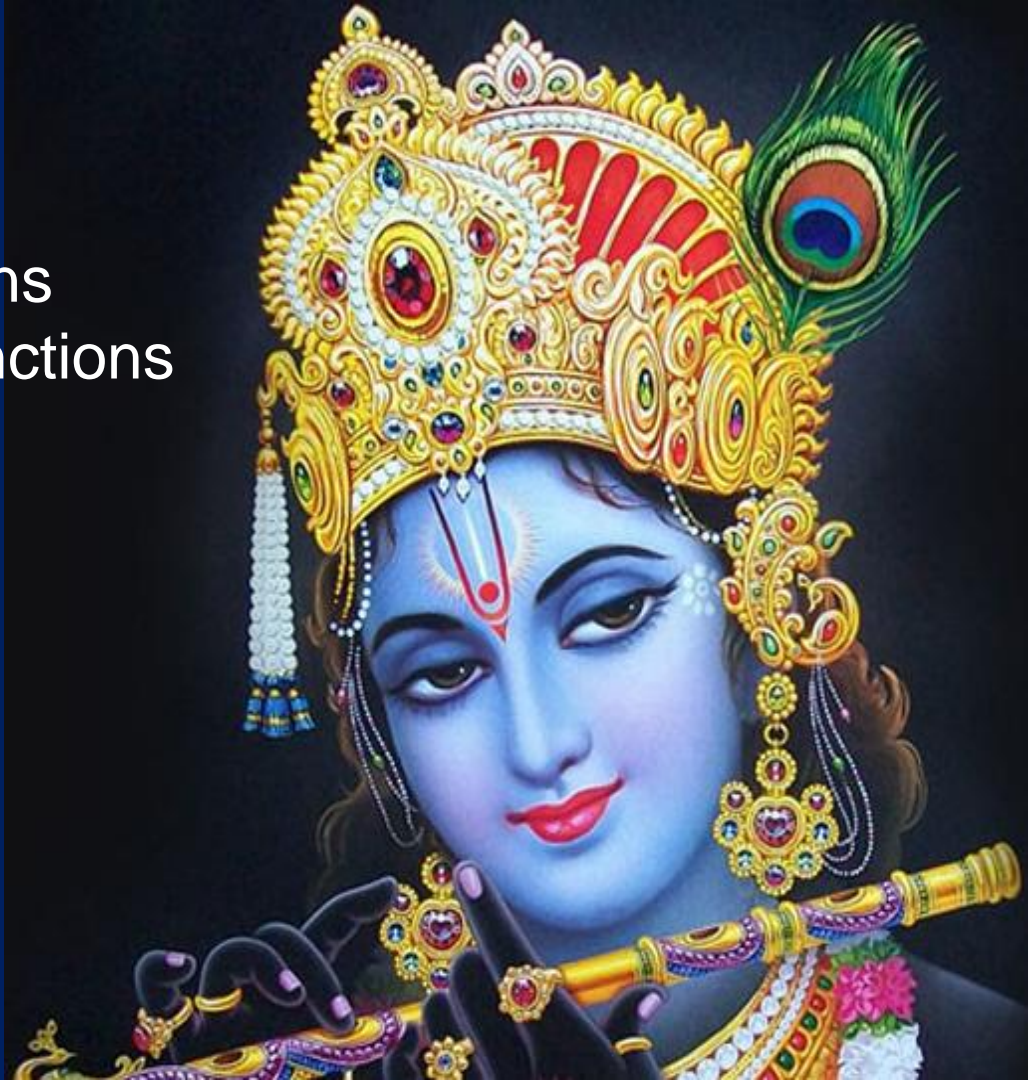
Sri Brahma Samhita: Verse-32

BS - 32

aṅgāni yasya sakalendriya-vṛtti-manti
paśyanti pānti kalayanti ciraṁ jaganti
ānanda-cinmaya-sad-ujjala-vigrahasya
govindam ādi-puruṣaṁ tam ahaṁ bhajāṁ

I worship Govinda, the primeval Lord, whose transcendental form is full of bliss, truth, substantiality and is thus full of the most dazzling splendor. Each of the limbs of that transcendental figure possesses in Himself, the full-fledged functions of all the organs, and eternally sees, maintains and manifests the infinite universes, both spiritual and mundane..

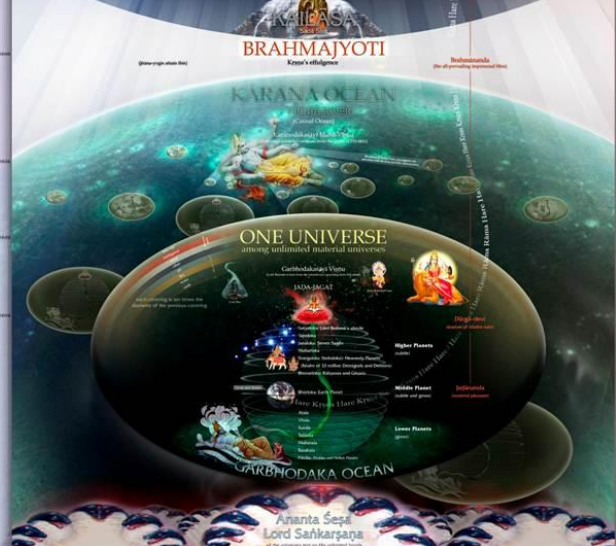
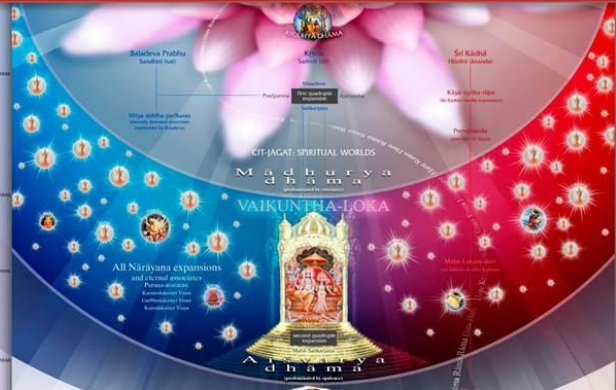
aṅgāni - the limbs
yasya - of whom
sakalendriya - of all the organs
vṛtti-manti – possessing functions
paśyanti - see
pānti - maintain
kalayanti - manifest
ciraṁ - eternally
jaganti – the universes



Ānanda	- bliss
cit (n)	- knowledge
maya	- full of
sat	- eternally
ujjala	- dazzling splendor
vigrahasya	- whose form
govindam	- Lord Kṛṣṇa
ādi	- original
puruṣaṁ	- person
tam	- Him
ahaṁ	- I
bhajāmi	- worship



aṅgāni



The Madhurya is situated within the world of madhurya, the name "Madhurya" is derived from the word "Madhurya" which means "sweetness". The word "Madhurya" is derived from the word "Madhurya" which means "sweetness". The word "Madhurya" is derived from the word "Madhurya" which means "sweetness".

The Madhurya is situated within the world of madhurya, the name "Madhurya" is derived from the word "Madhurya" which means "sweetness". The word "Madhurya" is derived from the word "Madhurya" which means "sweetness". The word "Madhurya" is derived from the word "Madhurya" which means "sweetness".

The Madhurya is situated within the world of madhurya, the name "Madhurya" is derived from the word "Madhurya" which means "sweetness". The word "Madhurya" is derived from the word "Madhurya" which means "sweetness". The word "Madhurya" is derived from the word "Madhurya" which means "sweetness".

The Madhurya is situated within the world of madhurya, the name "Madhurya" is derived from the word "Madhurya" which means "sweetness". The word "Madhurya" is derived from the word "Madhurya" which means "sweetness". The word "Madhurya" is derived from the word "Madhurya" which means "sweetness".

Siddha Deha



Nir Deha

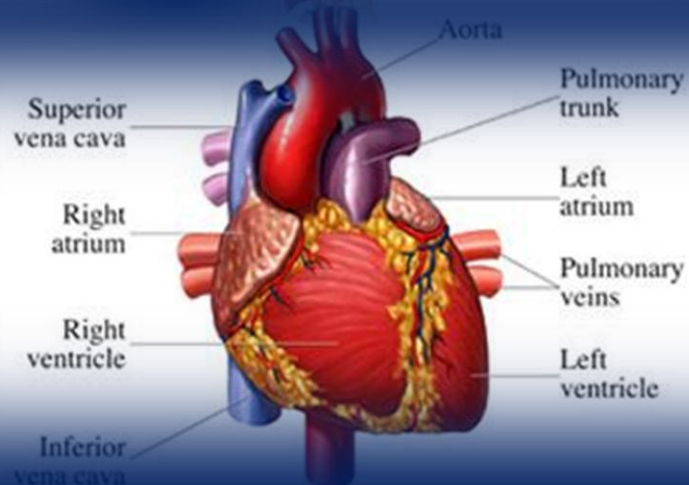
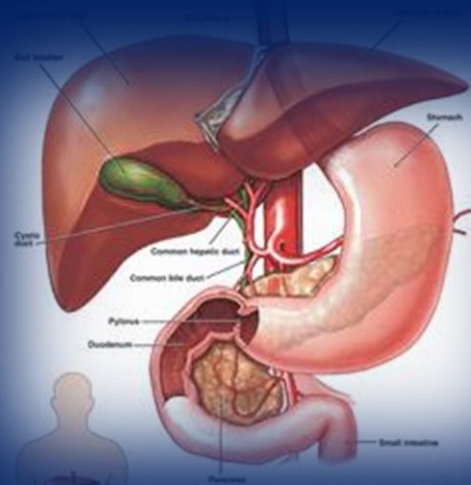


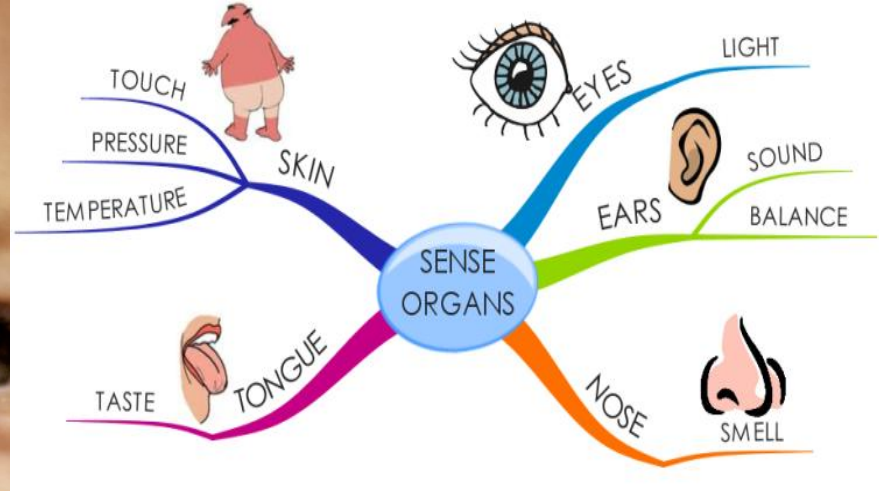
Mayic Deha

aṅgāni yasya sakalendriya-vṛtti-manti



Parts of the Human Brain







paśyanti pānti kalayanti ciraṁ jaganti

The Cosmic Beauty!



ānanda-cinmaya-sad..



...ujjala-vigrahasya





Giridhara gopālā

Bālā giridhara gopālā (2)

Shyāmala sharira kaustubha hāra (3)

Pitāmbara-dhara prabho murāre (2)

..... giridhara gopālā

Nanda sukumāra mana-mohanā-kāra (2)

Brindāvana-cara tulasi-hāra (2)

..... giridhara gopālā

Kamsa vidāra giridhara gopālā

kamsa vidara

mirā mānasa saro-vihāra (2)

..... giridhara gopālā





Thus ends...

Brahma Samhita –
04 (Verse 32)